



# Label Gallery 3



Label Design Software

## Label gallery 3

Label Gallery Standard Series, our flagship software product offers label design and printing solutions to users in retail, logistics, healthcare, chemical, automotive and other industries. No matter what your labeling needs are, Label Gallery is equipped to boost your operational productivity and profitability. Label Gallery is the most advanced and professional labeling software for desktop and enterprise users alike.

Available in affordable editions – Easy, Plus, TruePro, Network and Pocket.



## The Perfect Solution for All Labeling Needs

### Label Gallery 3 – Standard Series

**Label Gallery Easy**  
Entry-level label designer.

**Label Gallery Plus**  
Advanced label designer for professional barcode and RFID labeling.

**Label Gallery TruePro**  
Full featured modular labeling solution for label design, integration, custom screen interface and professional printing requirements.

**Pocket Label Gallery**  
The label printing software for Windows CE mobile devices.

### Label Gallery 3 – Developer Series

**Label Gallery SDK (Software Development Kit)**  
The label printing solution for Windows application developers.

**Pocket Label Gallery SDK (Software Development Kit)**  
The label printing solution for Windows CE mobile device application developers.



### Simple Label Design

#### Ease-of-Use

With few clicks, you can generate label design with text, barcode and graphics.

#### Reduce Error

#### Create Your Own Printing Application

GalleryPrint module provides a simplified user interface for easy data entry. Or, use GalleryForm to create your own custom screen. Both enable you to reduce data entry errors or meddling with label design.

### Powerful and Versatile Printing

#### RFID Label Design

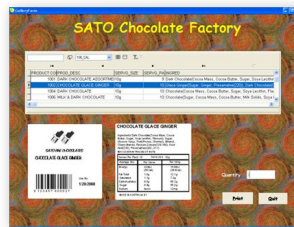
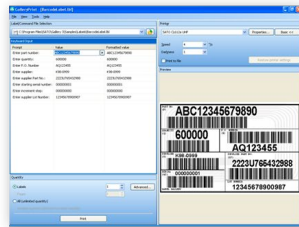
Design RFID smart label with flexibility to select variable data for label content or RF tag or both.

#### No Limitation to Database Connectivity

Database wizard, built-in query builder and customer SQL scripting help you retrieve data from almost any type of database.

#### Powerful Functionality

To enhance customizability, a solid range of built-in functions are available. Examples: Lookup tables, data manipulation, export format and VBScripting.

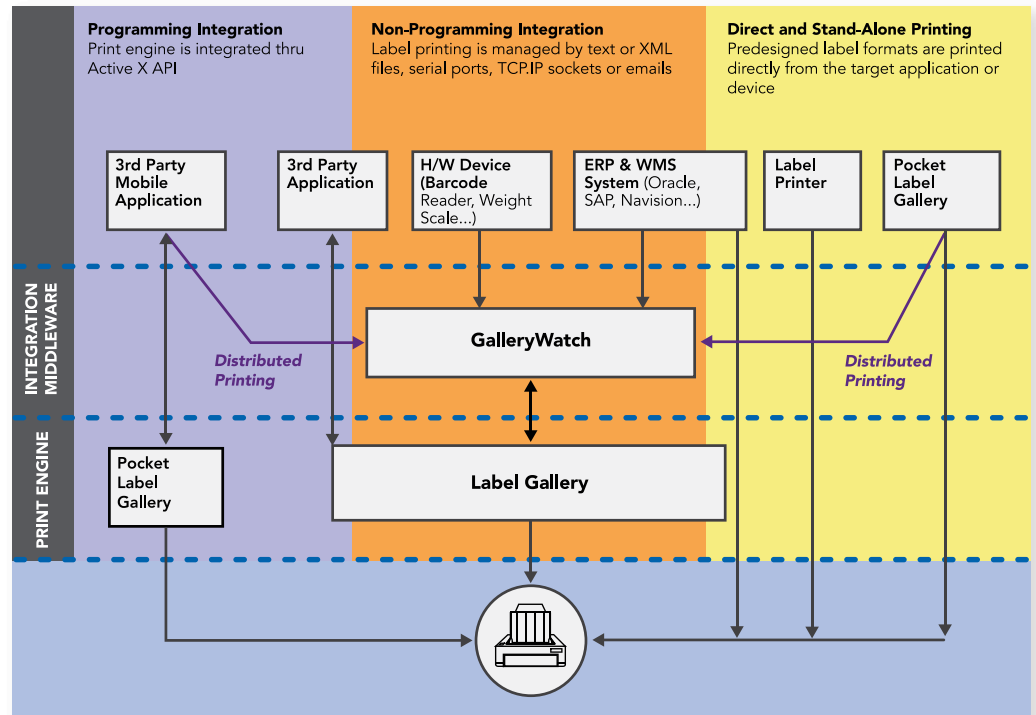


### Integration

Integrate barcode and RFID smart label printing to WMS, ERP, HIS or other type of information business system in simple and cost effective ways.

Label Gallery has several ways to integrate label printing to your existing software system.

- GalleryWatch is an automated label generation tool. It detects and manages changes in data sources such as structure text files, unstructured text, emails, XML database. It provides an affordable middleware solution when automated printing is required.
- You can even print labels directly from your SAP/R3 system utilizing Label Gallery as a label design tool. Also XML label formats can be stored into SATO XML-enabled printers. With the direct printing solution, there is no need for application middleware.
- Using Label Gallery as a print engine running in the background, application developers can invoke or "call" Label Gallery through a rich Active X programming interface.





# GENERAL SPECIFICATIONS

Label Gallery Standard Series

GENERAL	Free	Easy	Plus	True Pro
Up-to-date user interface with plenty of Wizards	●	●	●	●
Multi-lingual user interface*	Limited	●	●	●
Label locking and revision history			●	●
Customizable log file of printed labels			●	●
GalleryMemMaster – Font and picture download utility for label printers			●	●
LABEL DESIGN				
Basic label design tools, Unicode text...	●	●	●	●
All standard picture files and elements supported (JPG, WMF, GIF, BMP...)	●	●	●	●
Print Preview saving time, labels and money	●	●	●	●
Advanced label design elements and tools (e.g. text box, rich text formatting etc.)			●	●
Clipart gallery and fonts with industry commonly used symbols			●	●
BARCODE AND RFID SUPPORT				
All industry-standard linear	●	●	●	●
2D, EAN.UCC 128 and RSS (Linear and Composite) bar code types		●	●	●
Advanced support for standards like ASC (FACT), HIBC, Transfer Syntax and barcode compliance proofing			●	●
RFID smart label support (EPC Class 0+1/Gen2, I-Code, ISO 15693, My-d, Tag-IT, U-Code EPC 1.19 and others)			●	●
DATA HANDLING AND PROCESSING				
Date and time fields with selectable format	●	●	●	●
Prompted fields with data validation	Limited	Limited	●	●
Serialization with custom base, roll over and increment control	Limited	Limited	●	●
Visual Basic Scripting for advanced data processing			●	●
DATABASE SUPPORT				
Link label fields with a database source		Limited	●	●
Wide range of record selection and filtering possibilities		Limited	●	●
Import data from text (ASCII, CSV) and Excel files		●	●	●
Full ODBC, OLE DB and BDE database driver support for all database types, including Unicode		●	●	●
Multiple database connections, built-in query builder and custom SQL scripting			●	●
GalleryData – Full-featured database manager			●	●
LABEL PRINTING				
Stand-alone printing support			●	●
GalleryPrint – Easy to use print only module				●
GalleryForm – Data entry and label printing application design for desktop computers and Windows label printing				●
Pocket LG – Mobile Windows label printing				●
INTEGRATION AND CONNECTIVITY				
Internal command language (job files, command line options, DDE)			●	●
ActiveX (Automation) and .NET programming interface			●	●
SAP R/3 – no middleware required				●
Middleware integration module (network printing; non-Windows systems and other applications like WMS, inventory, etc)				●
GalleryWatch – File drop support with data filtering				●
GalleryWatch – Serial (COM) port connectivity				●
GalleryWatch – Internet and distributed printing (POP3 and TCP/IP socket interfaces)				●
OTHER EDITIONS				
Print Only edition			●	●
Network edition (multi-user licensing, suitable also for Citrix and Terminal Server environments)				●

\* Free – Supports English, German, Simplified Chinese, Italian, French



## Label Gallery Developer Series — Features by Edition

APPLICATION PRINTING	Label Gallery SDK	Pocket Label Gallery SDK
Desktop computer	●	
Windows mobile device		●
DEVELOPMENT ENVIRONMENT		
Microsoft Visual Studio 6	●	
Microsoft Visual Studio 2005	●	●
Borland Delphi	●	
PROGRAMMING INTERFACE		
Active X	●	
.Net	●	●



**SATO AMERICA, INC.  
CORPORATE**  
10350-A Nations Ford Rd  
Charlotte, NC 28273  
Phone: (704) 644-1650  
Fax: (704) 644-1662  
satosales@satoamerica.com

**LABEL MANUFACTURING, SERVICE & SALES**  
UNITED STATES MEXICO CENTRAL AMERICA  
CANADA CARIBBEAN

[www.satoamerica.com](http://www.satoamerica.com)