



FLAGTAGSOLUTION®

UHF Labels

The UHF Label for All Product Requirements

The FlagTagSolution allows customers to benefit from industry-leading RFID read and write performance by using low cost labels embedded with Smartrac Technology Group inlays, to encode, verify and print the Smartrac "FlagTag" in SATO RFID printers.

One Tag for ALL Applications



Different Content & Packaging Materials

Radio waves can be subject to interference. Metal, liquid products, consistency of goods or the packaging material may influence the performance of an UHF Tag. Sometimes this can lead to a shorter read distance or to the changing of frequency, so no reading of the tag is possible.

Different Types of Tags

Every company that will use UHF technology, needs to look for a tag that takes into account the different requirements and limitations of the goods and packaging.

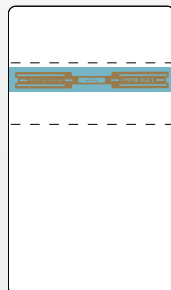
SATO Unique Solution: ONE Tag for All

The "FlagTagSolution" can be used on pallets, cases, metal drums, liquids, or aluminum cans without compromising read performance. SATO and Smartrac Technology Group developed a unique (patent pending) UHF label, "FlagTag" with the ability to perform in virtually any UHF RFID application.

Two SATO FlagTagSolutions Available

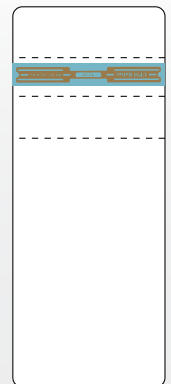
2 Perforations

For manual "slap & ship" applications using the SATO CL408e UHF Printer, a "FlagTag" label with two perforations allows for easy folding, creating the "flag" to be applied onto pallets and cases.



3 Perforations

SATO's **print & apply** "FlagTag" solution is designed for use with the M8485Se-RFID print engine and SATO's patent pending "FlagTag" application head. This fully automatic solution uses the "FlagTag" with three perforations, which allows automatic folding of the "FlagTag" in the print & apply or slap & ship process. Print and apply systems utilizing SATO's unique "FlagTag" label and application head are available from authorized SATO print engine integrators.



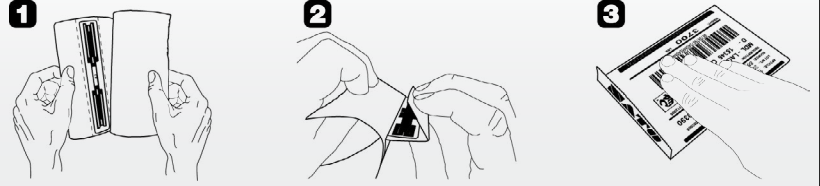


Pallet-Labeling with SATO Printer and FlagTag®

The FlagTag Solution is designed to be used with the SATO CL4e and GL4e Series on-demand, RFID-enabled printer, as well as SATO's RFID print engine for automated print and apply solutions.

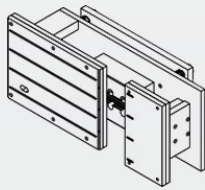
SATO FlagTag Solutions — Easy as 1 • 2 • 3

Application of "FlagTag" labels is easy as 1 • 2 • 3. Just remove the part of the label with the RFID antenna, fold over at the perforated line and the label is ready to apply!

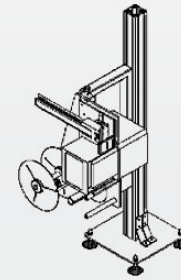


SATO FlagTag Applicator Head

SATO's patent pending "FlagTag" applicator tamp pad is specifically designed for automatic print & apply applications. This patent pending tamp pad assembles and applies a RFID "FlagTag" after it is encoded, verified & printed on a SATO RFID print engine. The "FlagTagSolution" integrated in RFID label applicators provides free air-like RF performance for RFID case and pallet labeling.

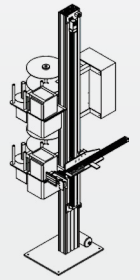


SATO Patent Pending "FlagTag" Applicator Head



Single Applicator

Automatic
Print & Apply
Solutions
Examples



Dual Applicator



PRINTER MODEL	RFID Print Engines	CL4e RFID Printers	GL4e RFID Printers
Printing Method	Direct Thermal/Thermal Transfer	Direct Thermal/Thermal Transfer	Direct Thermal/Thermal Transfer
Print Resolution	203 dpi	203 or 305 dpi	203 or 305 dpi
Standard Memory	6 MB RAM / 2 MB Flash	16 MB RAM / 2 MB Flash	32 MB DRAM / 8 MB Flash
Optional Memory	1 MB PCMCIA / 6 MB Flash	1 MB PCMCIA / 6 MB Flash	32 MB Flash
Maximum Print Width	5" (128 mm)	4.1" (104 mm)	4.1" (104 mm)
Maximum Print Length	49.2" (1249 mm)	49.2" (1249 mm) / 32.8" (833 mm)	98.98" (2514 mm)
Minimum Media Width	1" (25 mm) w/o RFID inlay; Varies with RFID inlay	0.87" (22 mm)	0.87" (22 mm)
Maximum Media Width	5.27" (134 mm)	5.1" (131 mm)	5.04" (128 mm)
Maximum Print Speed	12 ips (300 mm/sec)	6 ips (150 mm/sec)	10 ips (254 mm/sec)
Interface	RS232C, IEEE1284 (ECP), Wireless Ethernet (802.11g), LAN (10/100BaseT), Twinax/Coax, RS422/485, USB Adapter	RS232C, IEEE1284 (ECP), Wireless Ethernet (802.11g), LAN (10/100BaseT), Twinax/Coax, RS422/485, USB Adapter	Std: IEEE1284 (ECP), RS232C, USB (2.0) Opt: Wireless Ethernet (802.11g), LAN (10/100BaseT)
Protocols	UHF	UHF & HF	UHF

SATO AMERICA CORPORATE

10350-A Nations Ford Rd
Charlotte, NC 28273
Phone: (704) 644-1650
Fax: (704) 644-1662
sales-sallc@sato-global.com

LABEL MANUFACTURING, SERVICE & SALES

UNITED STATES MEXICO CENTRAL AMERICA
CANADA CARIBBEAN