



FLAGTAG™ SOLUTIONS

UHF Labels

The UHF Label for All Product Requirements

The FlagTag Solution allows customers to benefit from industry-leading RFID read and write performance by using low cost labels embedded with Smartrac Technology Group inlays, to encode, verify and print the Smartrac "FlagTag" in SATO RFID printers.

One Tag for ALL Applications



Different Content & Packaging Materials

Radio waves can be subject to interference. Metal, liquid products, consistency of goods or the packaging material may influence the performance of an UHF Tag. Sometimes this can lead to a shorter read distance or to the changing of frequency, so no reading of the tag is possible.

Different Types of Tags

Every company that will use UHF technology, needs to look for a tag that takes into account the different requirements and limitations of the goods and packaging.

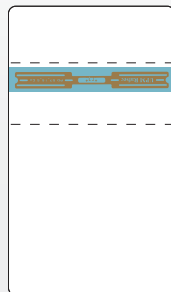
SATO Unique Solution: ONE Tag for All

The "FlagTag Solution" can be used on pallets, cases, metal drums, liquids, or aluminum cans without compromising read performance. SATO and Smartrac Technology Group developed a unique (patent pending) UHF label, "FlagTag" with the ability to perform in virtually any UHF RFID application.

Two SATO FlagTag Solutions Available

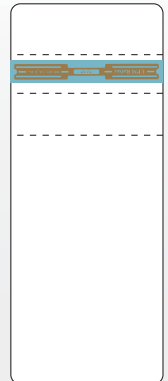
2 Perforations

For manual "slap & ship" applications using the SATO CL4NX™ Printer, a "FlagTag" label with two perforations allows for easy folding, creating the "flag" to be applied onto pallets and cases.



3 Perforations

SATO's **print & apply** "FlagTag" solution is designed for use with the S84ex RFID print engine and SATO's patent pending "FlagTag" application head. This fully automatic solution uses the "FlagTag" with three perforations, which allows automatic folding of the "FlagTag" in the print & apply or slap & ship process. Print and apply systems utilizing SATO's unique "FlagTag" label and application head are available from authorized SATO print engine integrators.





PRODUCT FEATURES

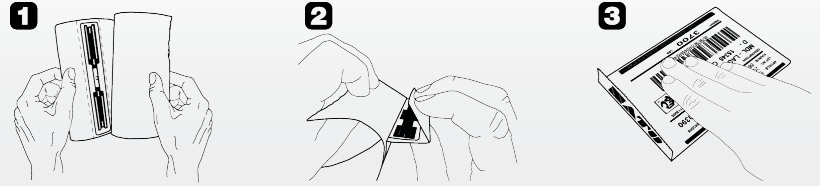
UHF Label for all Product Requirements

Pallet-Labeling with SATO Printer and FlagTag™

The FlagTag Solution is designed to be used with the SATO CL4NX Series on-demand, RFID-enabled printer, as well as SATO's RFID print engine for automated print and apply solutions.

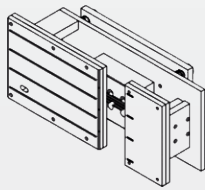
SATO FlagTag Solutions — Easy as 1 • 2 • 3

Application of "FlagTag" labels is easy as 1 • 2 • 3. Just remove the part of the label with the RFID antenna, fold over at the perforated line and the label is ready to apply!

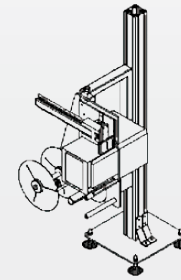


SATO FlagTag Applicator Head

SATO's patent pending "FlagTag" applicator tamp pad is specifically designed for automatic print & apply applications. This patent pending tamp pad assembles and applies a RFID "FlagTag" after it is encoded, verified & printed on a SATO RFID print engine. The "FlagTag Solution" integrated in RFID label applicators provides free air-like RF performance for RFID case and pallet labeling.

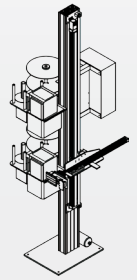


SATO Patent Pending "FlagTag" Applicator Head



Single Applicator

**Automatic
Print & Apply
Solutions
Examples**



Dual Applicator



PRINTER MODEL	S84ex RFID Print Engines	CL4NX RFID Printers
Printing Method	Direct Thermal/Thermal Transfer	Direct Thermal/Thermal Transfer
Print Resolution	203 / 305 / 609 dpi	203 / 305 / 609 dpi
Standard Memory	48 MB Flash, 64 MB RAM	Dual CPU: CPU1: 2 GB Flash, 256 MB RAM CPU2: 4 MB Flash, 64 MB RAM
Maximum Print Width	4.1" (104.0 mm)	4.1" (104.0 mm)
Maximum Print Length	98.43" (2,500 mm) / 59.06" (1,500 mm) / 15.75" (400 mm)	98.43" (2,500 mm) / 59.06" (1,500 mm) / 15.75" (400 mm)
Minimum Media Width	0.51" (13 mm)	0.98" (25 mm)
Maximum Media Width	5.15" (131 mm)	5.15" (131 mm)
Maximum Print Speed	16 ips (406.4 mm/s) / 14 ips (355.6 mm/s) / 6 ips (152.4 mm/s)	10 ips (254 mm/s) / 8 ips (203 mm/s) / 6 ips (152 mm/s)
Interface	USB 2.0 (Type B), RS232C, IEEE1284, Ethernet (Protocol TCP/IP: LPR, FTP, TELNET, SNTP), D-SUB 25 pin EXT (14 pin conversion cable included)	USB 2.0 (Type A, Type B), Ethernet (IPv4/IPv6) on Rear Panel, USB 2.0 (Type A) on Front Panel, RS-232C, IEEE1284, EXT on Standard Interface Board, Bluetooth® Ver. 3.0
Protocols	UHF	UHF & HF

SATO AMERICA CORPORATE

10350-A Nations Ford Rd
Charlotte, NC 28273
Phone: (704) 644-1650
Fax: (704) 644-1662
sales-sallc@sato-global.com

LABEL MANUFACTURING, SERVICE & SALES

UNITED STATES MEXICO CENTRAL AMERICA
CANADA CARIBBEAN

www.satoamerica.com