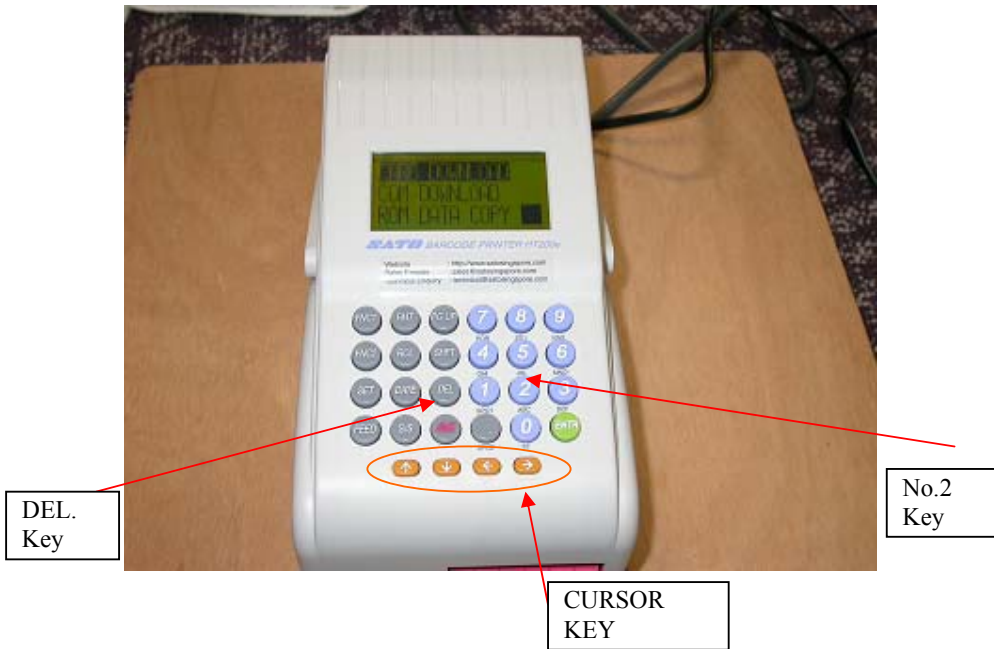


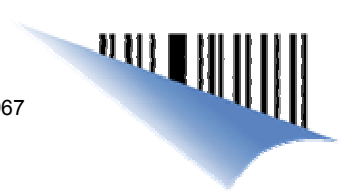
HT200e Firmware download procedure

a)Printer Setup

1. Connect between the HT200e and PC (Windows95 or 98) by the RS-232C cable
2. Press and hold the “DEL” and the “2”key then power ON
3. Select “COM DOWNLOAD”by the cursor key and press the “ENTR”
* LCD shows “ **DOWNLOAD READY** “
See “b). PC Setup”below

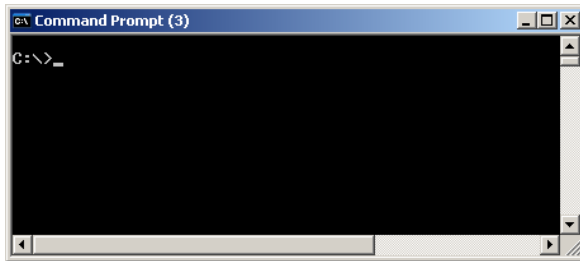
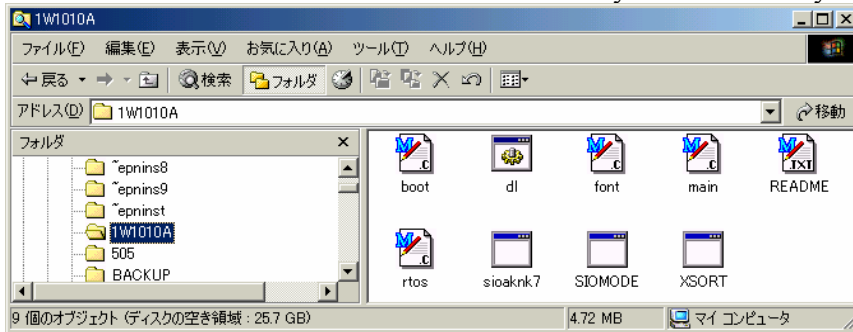


- When finish the download of the “dl 1”, press “ENTR” key of the HT200e
4. Select “COM DOWNLOAD” by the cursor key and press the “ENTR”again
See “b). PC Setup”below from the procedure “3”
 5. When finish the download of the “dl 2”, press “ENTR” key of the HT200e
 6. Power off
 7. Press and hold the “AC” key and power ON until " Memory Clear " appear.
to perform the memory all clear
 8. Input the password “310”and then press “ENTR”
Printer will display Format no (..) Then type in your format no.



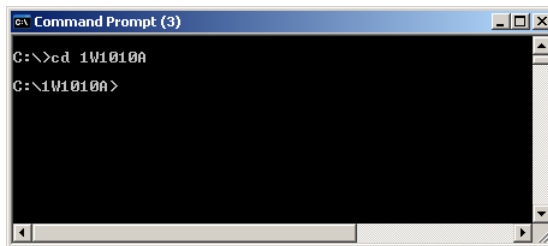
b). PC Setup

1. Save the folder of the firmware into your PC directory

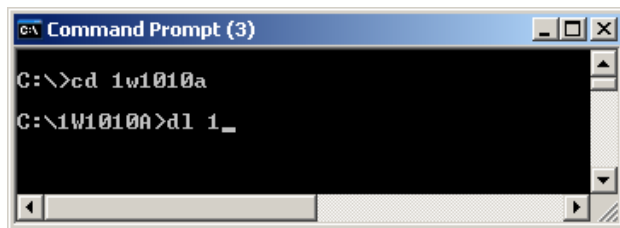


2. Open the MS-DOS Prompt and go to the correct directory where you saved the folder
Example: If you have saved the folder in C:\ drive. Then you type in as follows:
C:\> CD 1W1010A then press 'Enter'

Folder name



3. Input “dl 1”to download the files “rtos”and “main”, then press the “Enter”key of the PC



See “a). Printer Setup”above from the procedure “4”

4. Input “dl 2”to download the file “font”, then press the “Enter”key of the PC
See “a). Printer Setup”above from the procedure “6”